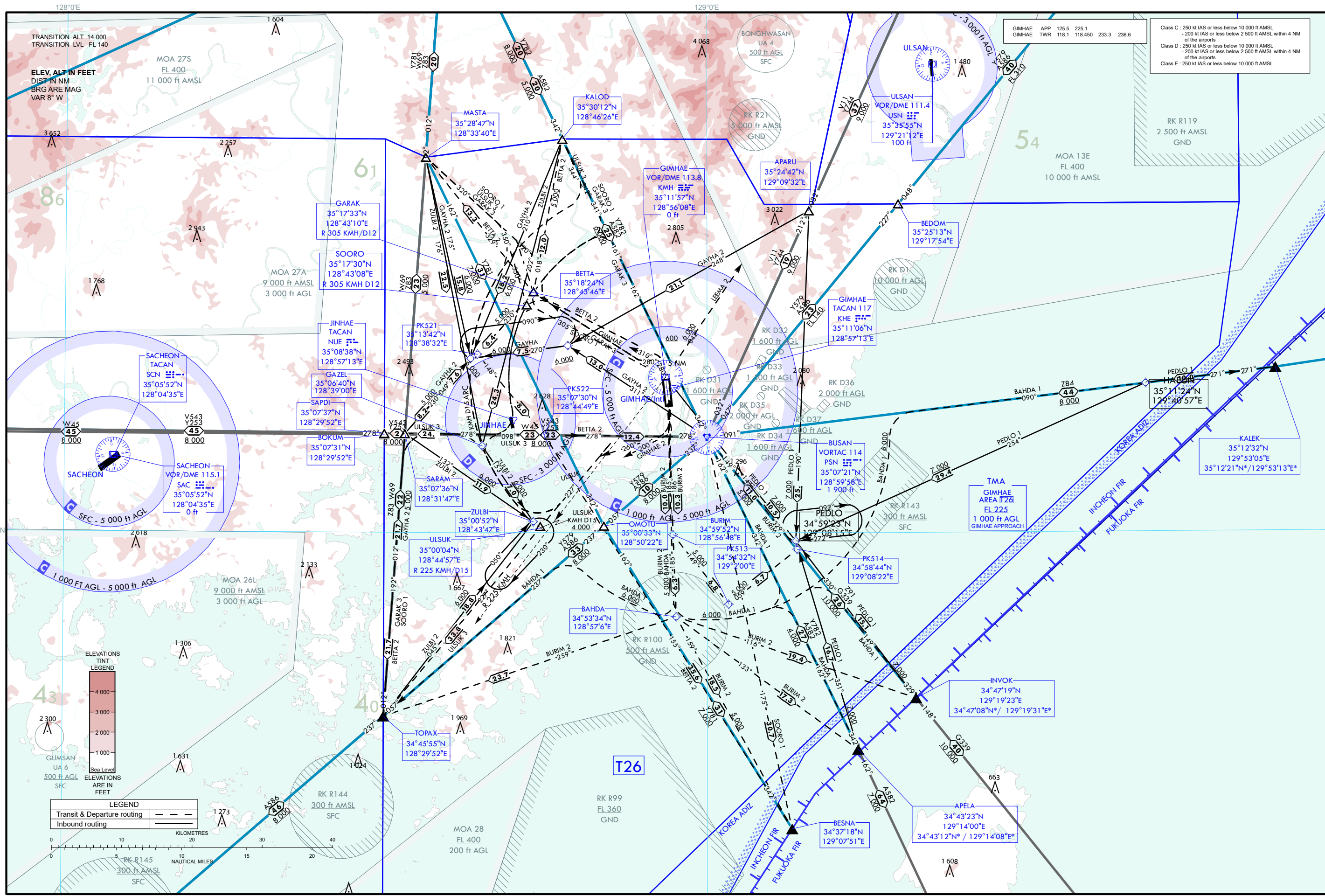
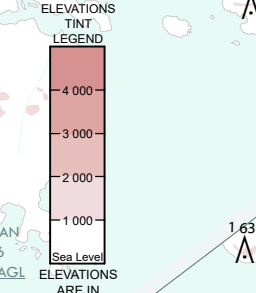


AREA CHART - ICAO

TMA GIMHAE(Gimhae Airport)



Class C : 250 kt IAS or less below 10 000 ft AMSL  
- 200 kt IAS or less below 2 500 ft AMSL within 4 NM of the airports  
Class D : 250 kt IAS or less below 10 000 ft AMSL  
- 200 kt IAS or less below 2 500 ft AMSL within 4 NM of the airports  
Class E : 250 kt IAS or less below 10 000 ft AMSL



LEGEND  
Transit & Departure routing  
Inbound routing

Change : Amended phrase(W66 → W69).

PUBLISHED BY THE OFFICE OF CIVIL AVIATION, MINISTRY OF LAND, INFRASTRUCTURE AND TRANSPORT, REPUBLIC OF KOREA